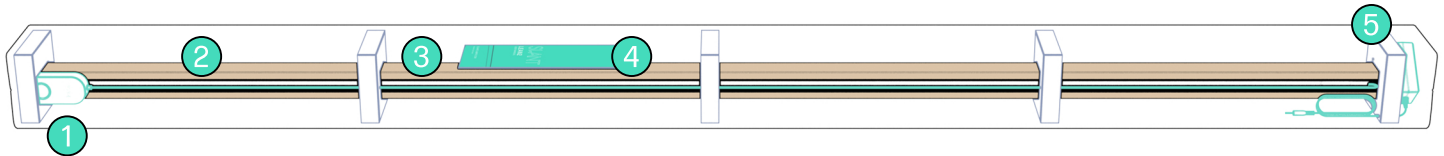




SLANT lean2
USER MANUAL

SLANTLAMPS.COM
REVISED 11.02.2021

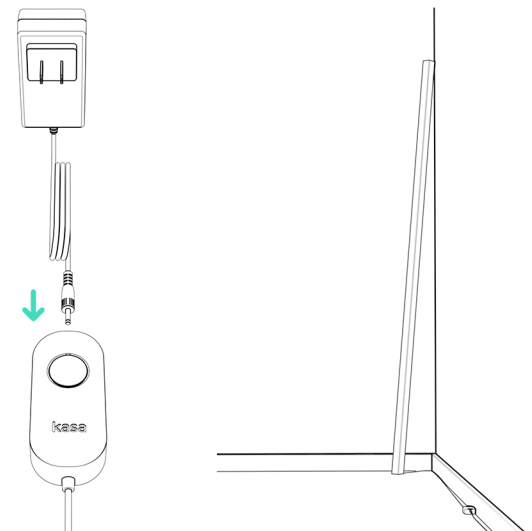
WHAT'S IN THE BOX



1. Controller 2. LEAN2 Floor Lamp 3. Mounting Kit 4. Instruction Materials 5. Power cord

SETTING UP YOUR NEW LEAN2

1. Plug the power cord into the controller. Your LEAN2 lamp comes pre-programmed with 3 settings. Pressing the switch once turns the lamp on and off. Pressing the button twice quickly cycles through the presets. See the below section to install the app and have full control over brightness, color, presets and more. Wi-Fi required for app use.
2. **Place the lamp in a suitable location!** Since this lamp is not freestanding, it needs to be secured to the wall so that children and pets can't knock the lamp over. Follow instructions on Page 3 for installing the **corner mount**. Only use the lamp indoors and do not expose to water or excessive moisture.



CONNECTING THE APP

1. **Download Kasa.** Get the **Kasa Smart™** app from the App Store® or on Google Play®. Search for "Kasa Smart" and download the application. Alternatively, scan the QR code to the right.
2. **Connect to your network.** Connect your mobile device to a 2.4GHz Wi-Fi network.
3. **Log in.** From within the app, log in with your TP-Link ID or create an account if you do not have one.
4. **Add the LEAN2 Device.** Tap the + button in the app and select **Device** to add your new LEAN2 smart lamp. Follow app instructions to complete the setup.



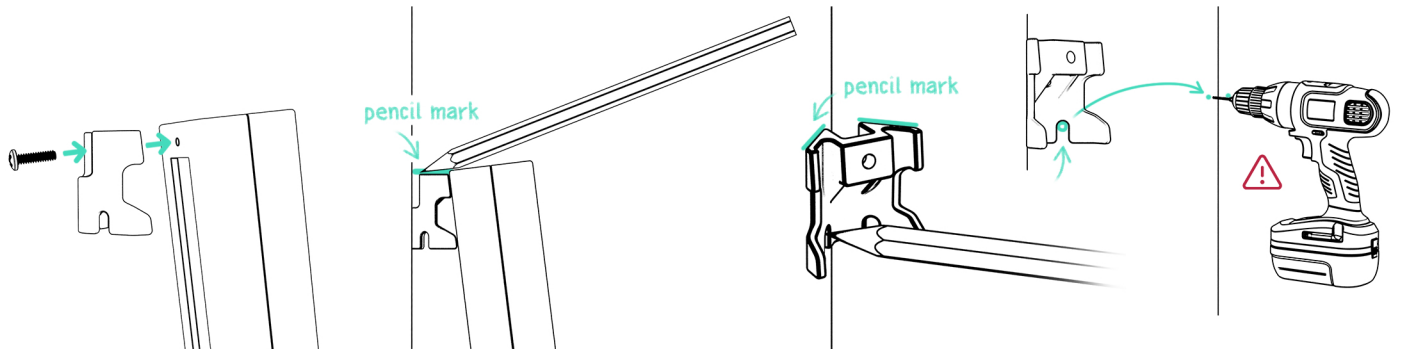
Disregard instructions on mounting the light strip.

For more instructions, refer to the User Manual for the Kasa Smart Strip included in the box or visit: www.tp-link.com/us/support/download/kl430/

Google Play and the Google Play logo are trademarks of Google LLC. Kasa Smart and the Kasa Smart logo are trademarks of TP-Link Corporation Limited. App Store and the App Store Logo are trademarks of Apple Inc. Slant Lamps is not affiliated with these companies.

SECURING TO WALL

For a video on installing the corner mount, visit slantlamps.com/support.



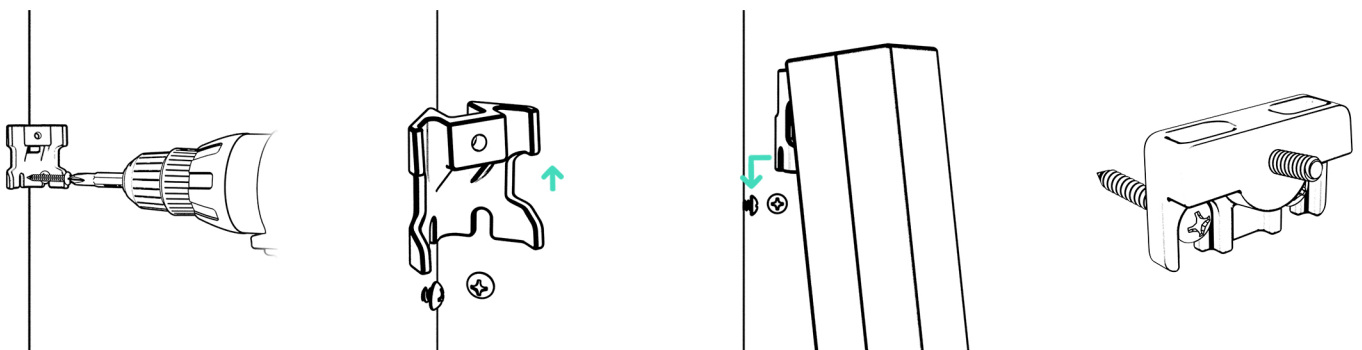
1. Use a phillips screwdriver to attach the **corner mount** to the lamp using the #6 x 1/2" phillips head screw.

2. Place the lamp in its final position. Depending on the thickness of the baseboards, the foot of the lamp will be around 7" - 9" from the corner of the wall. Use a pencil to make a light mark on the wall along the top of the **corner mount**.

3. Remove the **corner mount** from the lamp and place the lamp aside. Line the **corner mount** back up with the mark on the wall and use a pencil to mark the locations of the screws. This will be at the top of the slots.

4. Use a 5/64" drill bit to drill pilot holes for the screws.

CAUTION: make sure not to place a screw into wiring. Electrical shock is possible.



6. Fasten the **corner mount** to the wall using the two #6 x 1" wood screws. Use a handheld screwdriver to tighten. Do not over-tighten, the **corner mount** should be able to slide out with the screws in place.

7. Remove the **corner mount** by sliding it upward. Reattach the corner mount to the lamp using the #6 x 1/2" phillips head screw (as in **step 1**).

8. With the **corner mount** attached to the lamp, slide the **corner mount** back over the two screws in the wall. Make sure the foot of the lamp is in the correct position and installation is complete.

Optionally, use the **wall mount** to secure the wall to a flat wall, not in the corner. The same process applies to install the **wall mount**.

CARE & MAINTENANCE

Use a soft, dry cloth (such as microfiber cleaning cloth) to wipe the lamp down. For scratches in wood, a natural and non-toxic beeswax can be used. Buff with a dry cloth.

WARRANTY & LEGAL

WARRANTY

Slant Lamps LLC warrants the LEAN2 floor lamp shall be free from defects in workmanship or materials under normal use and service for 90 days after date of purchase. This warranty applies to products purchased only by the original purchaser from an authorized seller. Slant Lamps LLC reserves the right to inspect the damaged product before having any obligation under this limited warranty. All costs of shipping for inspection shall be borne solely by the purchaser. Slant Lamps LLC, at its discretion, shall repair or replace the defective unit covered by this warranty.

EXCLUSIONS AND LIMITATIONS OF WARRANTY

This Limited Warranty applies only to products manufactured by Slant Lamps LLC.

The Limited Warranty does not apply to any non-Slant Lamp LLC products even if packaged or sold with SLANT LAMP LLC products.

This Limited Warranty does not cover any damage including, but not limited to, the following:

- Damage caused by improper installation, general negligence, Acts of God, accident, abuse, misuse, flood, tornadoes, hurricane, fire, earthquake or other external causes.
- Damage caused by improper cleaning.
- Damage caused by exposure to chemicals, extreme moisture, humidity, or natural sunlight. Slant Lamps are designed to be used in indoor, air conditioned environments, out of prolonged direct sunlight.

LIABILITY In no event shall Slant Lamps LLC be liable for any consequential, indirect, incidental, special, exemplary, or punitive damages, lost profits or revenues or diminution in value, arising out of or relating to any breach of these terms, whether or not the possibility of such damages has been disclosed in advance by customer, regardless of the legal or equitable theory (contract, tort or otherwise) upon which the claim is based, and notwithstanding the failure of any agreed or other remedy of its essential purpose.

LIABILITY In no event shall Slant Lamps LLC's aggregate liability arising out of or related to this agreement, whether arising out of or related to breach of contract, tort (including negligence) or otherwise, exceed the total of the amounts paid to Slant Lamp LLC for the goods sold hereunder.

INDEMNIFICATION Customer will at all times defend, indemnify and hold harmless Slant Lamps LLC and its officers, directors, shareholders, employees, accountants, attorneys, agents, affiliates, successors and assigns from and against any and all damages, injuries (including death), liabilities, costs and expenses, including reasonable legal fees and expenses arising out of or related to third party claims, actions or demands arising out of or related to any (1) breach of any provision in these Terms by Customer or End User or (2) improper or negligent installation or use, or unauthorized repair, or integration into another lighting product, of a Product by Customer or End User (or its agents). Customer shall not settle, compromise or consent to the entry of any judgement with respect to any pending or threatened claim without Slant Lamps LLC's consent unless the settlement, compromise or consent provides for and includes an express, unconditional release of all claims, damages, liabilities, costs and expenses, including reasonable legal fees and expenses, against Slant Lamps LLC.